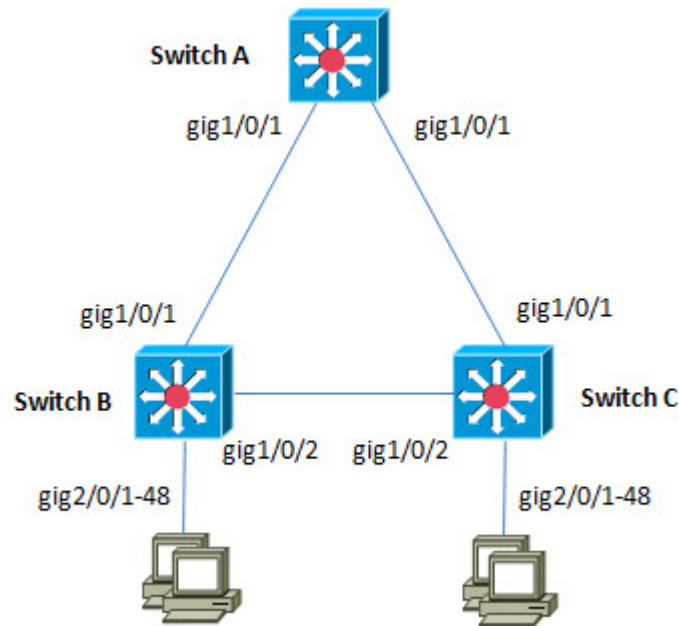


When switches are connected together, it's important to keep traffic flowing in both directions over the links. In Scenario 3, we'll need to leverage a switch feature to make sure that happens...

Three switches are connected to each other as shown in the network diagram. Switch A has nothing but links to other switches, while switches B and C have links to switch A, as well as links to end users. The links between switches are provided over fiber optic media; the end users connect via twisted pair copper cables.



All three switches support the same set of VLANs, and all three use the Spanning Tree Protocol to prevent bridging loops from forming. You will need to add a Cisco feature to make sure that the links between switches can always support bidirectional traffic. In the event of an odd link failure that prevents data from flowing in one direction, the link must be automatically disabled.